

F120

UNC

ISO
2568

2A

1.75XP

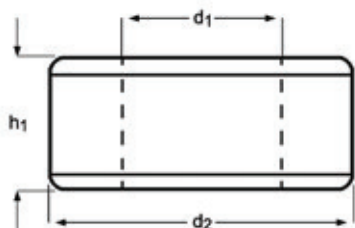
HSS



- UNC Gängsnitt, Spåndrivande Skär
- UNC Kierreleuat, lastua työntävä kärki
- UNC Gjengesnitt, Spøndrivende Skjær
- UNC Gevindbakker, Spåndrivende Skær

F120

F120	▪	1.1	1.2	1.3	3.1	3.2	3.3	7.1	7.2	7.3						
	•	1.4	2.1	2.2	3.4	4.3	5.1	5.2	5.3	6.1	6.2	6.3	7.4	8.1	8.2	8.3



UNC	TPI	d ₁ nom mm	d ₂ Ø mm	h ₁ mm	F120
8	32	4.17	20	7	F1208-32
10	24	4.83	20	7	F12010-24
1/4	20	6.35	20	7	F1201/4
5/16	18	7.94	25	9	F1205/16
3/8	16	9.53	30	11	F1203/8
7/16	14	11.11	30	11	F1207/16
1/2	13	12.70	38	14	F1201/2
9/16	12	14.29	38	14	F1209/16
5/8	11	15.88	45	18	F1205/8
3/4	10	19.05	45	18	F1203/4
7/8	9	22.23	55	22	F1207/8
1"	8	25.40	55	22	F1201